



**Bwrdd Iechyd Lleol
Local Health Board**
Conwy



**Bwrdd Iechyd Lleol
Local Health Board**
Sir Ddinbych
Denbighshire



**CYNGOR
Sir Ddinbych
Denbighshire
COUNTY COUNCIL**

Joint Commissioning Strategy

Adult Mental Health and Social Care

Conwy and Denbighshire

2007 – 2010

Summary Document

**Consultation Period
14th May 2007 to 30th September 2007**

Mae'r ddogfen yma ar gael yn Gymraeg.

If you want more information please contact

Jane Jones
Joint Strategic Commissioning Manager
Adult Mental Health and Social Care
Conwy and Denbighshire

Jane.jones@denbighshirelhb.wales.nhs.uk

Phone 01745 589975

1 Setting the Scene

This document is a summary of the Joint Commissioning Strategy for Adult Mental Health and Social Care in Conwy and Denbighshire 2007 – 2010.

It outlines the long term plans for planning, purchasing and evaluating mental health services for adults in Conwy and Denbighshire.

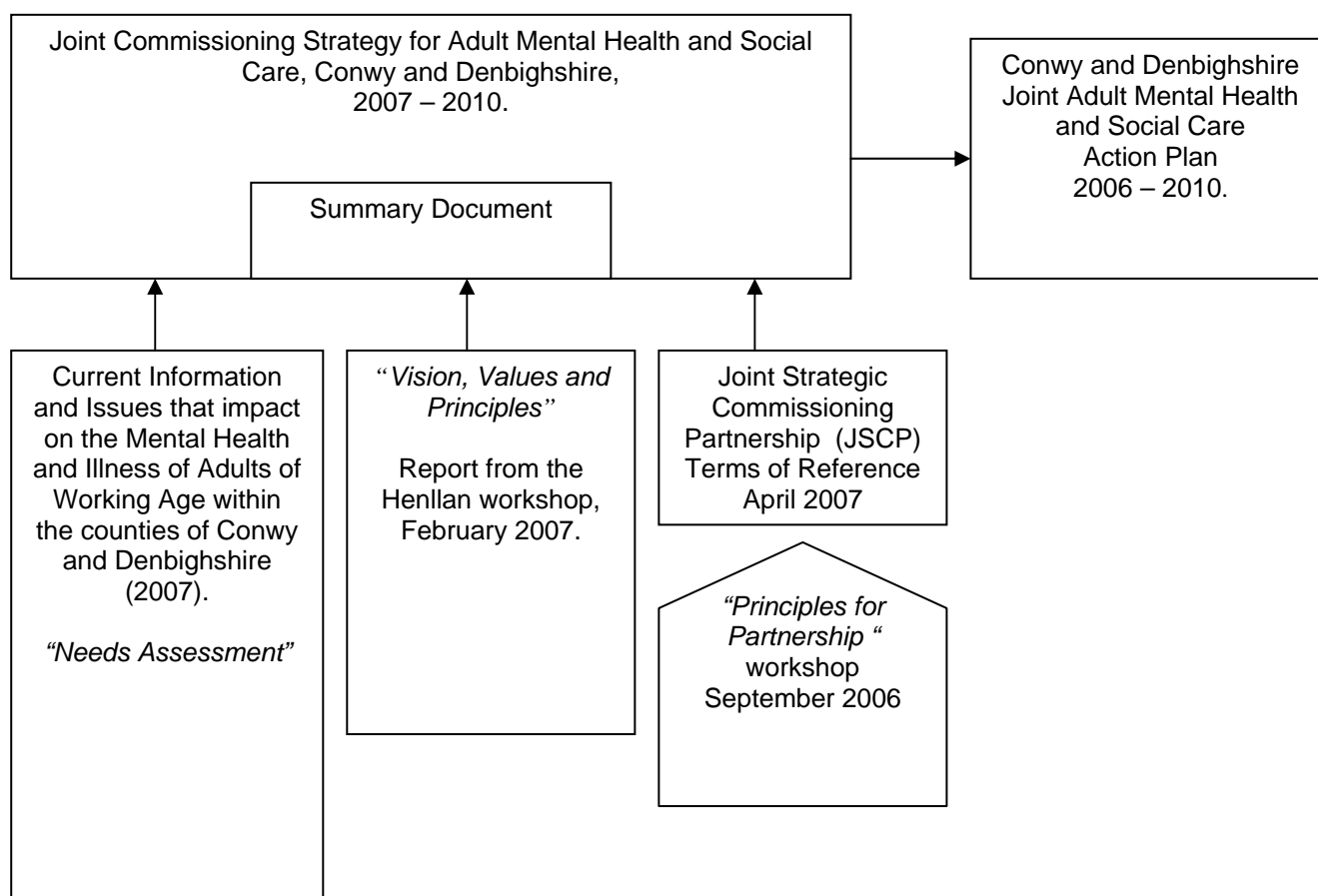
Several reports have been produced in Conwy and Denbighshire recently which are relevant to this summary document -

1. Cunnah F, (2007) Mental Health (Adults), Current Information and Issues that impact on the Mental Health and Illness of Adults of Working Age within the counties of Conwy and Denbighshire. *(This document is referred to as the "Needs Assessment")*.
2. Jones, J, (2007), Joint commissioning Strategy for Adult Mental Health and Social Care, Conwy and Denbighshire, 2007 – 2010 *(This is the full strategy document)*.
3. Jones, J, (2006), Conwy and Denbighshire Joint Adult Mental Health and Social Care Action Plan, 2006 – 2010. *(This action plan provides a local response to the National Service Framework and Baseline Reviews, and identifies how those actions will be achieved in Conwy and Denbighshire)*.
4. Jones, J, (2007), Vision, Values and Principles, Report from the Henllan Workshop, 16th February 2007. *(This report is from the stakeholder event which was held to inform the Joint Commissioning Strategy)*.

Copies of these reports are available on the websites of Conwy and Denbighshire Local Health Board's (LHB's) and Local Authorities (LA's). Hard copies can also be provided. (See Comments Section at the back of this document for details).

The diagram below outlines the process for developing the strategy, how the actions will be achieved, and the relationship between the other relevant documents.

Other Relevant Documents and Reports



2 Introduction

This strategy covers Conwy and Denbighshire Local Health Board's and Local Authority's responsibility for commissioning. Commissioning is defined as "the process of specifying, securing and monitoring services to meet individuals' needs at a strategic level." This strategy will help the partners to agree a direction for adult mental health services and set the priorities for development from 2007 – 2010.

3 Background

A partnership was established in 2005, to manage the provision of adult mental health services in Conwy and Denbighshire. The partners are Conwy and Denbighshire NHS Trust and Conwy and Denbighshire Local Authorities. An Integrated Partnership Board (IPB) was set up under Section 31 of the 1999 Health Act, to oversee the joint provision of adult mental health services.

A Joint Strategic Commissioning Partnership (JSCP) was set up in 2006, to manage and co-ordinate commissioning. This partnership is outside the IPB. The members of the JSCP are Conwy and Denbighshire LHB's and LA's. A Joint Strategic Commissioning Manager has responsibility for commissioning on behalf of the 4 partners.

Members of the JSCP were asked to give their views on their organisation's attitude to commissioning in 2006. Partners agreed that some activities have been joined up, but there is still room to improve.

4 Vision, Values and Principles

The joint vision for commissioning is *"to improve the quality of life for adults with mental health problems, in Conwy and Denbighshire, through the commissioning of high quality services which promote social inclusion and choice."*

The National Service Framework (NSF) for Adult Mental Health sets the standards for adult mental health services in Wales. It includes 4 principles: Equity, Empowerment, Effectiveness and Efficiency.

Clinical Governance is the method for ensuring that NHS organisations are accountable for improving the quality of services. The clinical governance framework has 5 themes: Patient experience, Process for quality improvement, Staff focus, Use of information, Leadership, strategy and planning.

People with an interest in improving mental health services in Conwy and Denbighshire were invited to a workshop on 16th February to agree the principles that will support the Joint Commissioning Strategy.

The principles that were agreed at the workshop are:

- A holistic approach – *"individuals should be treated as a whole person, and not just as a user of mental health services."*
- Community Based Services – *"individuals should be able to receive flexible services, as close to their home location as possible."*
- Carers Issues – *"Carers should receive appropriate support to enable them to continue their caring role."*
- Health Promotion and Education – *"mental health education should be available at all levels of service, and all sectors, at an appropriate level."*
- Communication - *"communication should be timely and appropriate to the situation."*
- Housing – *"good quality housing should be available to all mental health service users and their carers."*

5 Key Strategic Drivers

There are some national and Wales plans that will affect the priorities for Conwy and Denbighshire.

These are –

- Mental Health Bill
- Mental Capacity Act (2005)
- "Raising the Standard;" The Revised National Service Framework and Action Plan for Wales (2005)
- Baseline Reviews of Conwy and Denbighshire
- Service and Financial Framework Targets (SaFF)

- The Review of Health and Social Care in Wales
- Designed for Life
- Designed for North Wales
- Making the Connections
- Beyond Boundaries, Citizen Centred Local Services for Wales (2006)
- Fulfilled Lives, Supportive Communities (2006)
- All-Wales Review of Adult Mental Health Services and Commissioning
- Health, Social Care and Wellbeing Strategies (2008 – 2011)

6 Relationships with Other Structures and Forums

Local mental health groups have recently reviewed their roles and how they relate to each other.

Both Conwy and Denbighshire have local multi-agency planning groups, in Conwy this is called the Management and Policy Group (MAP), and in Denbighshire this is the Denbighshire Mental Health Planning Group.

Joint sub-groups, across Conwy and Denbighshire, have been established which have an interest in rural issues, employment and training and accommodation. These groups are called

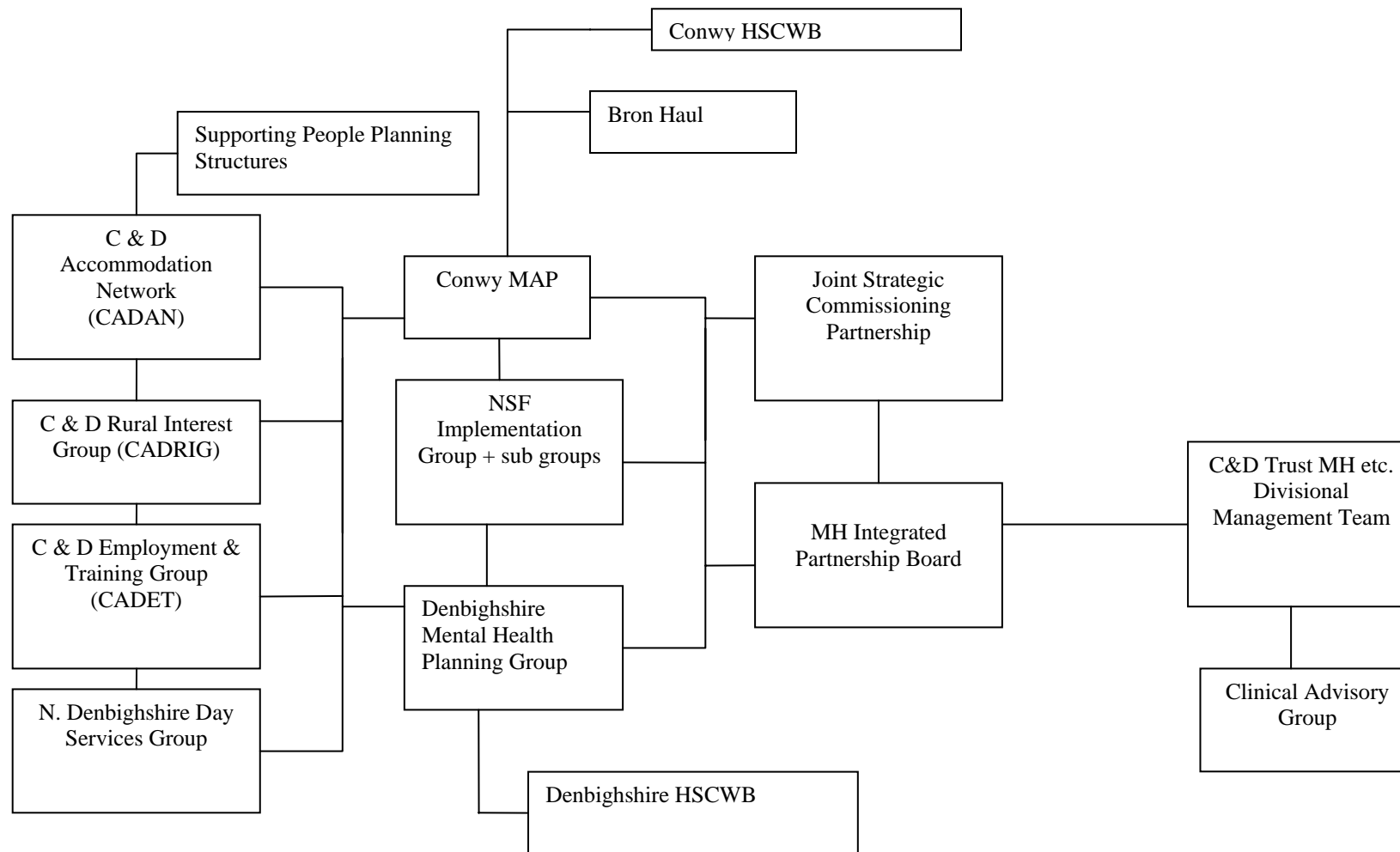
- CADRIG (Conwy and Denbighshire Rural Interest Group)
- CADET (Conwy and Denbighshire Employment and Training group)
- CADAN (Conwy and Denbighshire Accommodation Network)

A joint Conwy and Denbighshire group has responsibility for monitoring the NSF. This group has 6 sub-groups, which report progress against the Joint Local Action Plan to the NSF group. The NSF group reports to the Integrated Partnership Board, and the Joint Strategic Commissioning Partnership.

Service users and carers are involved in setting planning and commissioning priorities and making recommendations for the development of services.

The diagram on the next page shows how the groups link together.

How the Conwy and Denbighshire Adult Mental Health and Social Care Groups relate to each other



7 Needs Assessment

A needs assessment was produced to inform the priorities included in this joint commissioning strategy. The needs assessment identifies factors which may influence the commissioning of adult mental health services in Conwy and Denbighshire now and in the future. The needs assessment compares Conwy and Denbighshire with other areas in Wales.

The significant factors in adult mental health in Conwy and Denbighshire are –

- Higher rates of mental illness than other areas in Wales
- Poverty will influence people's mental wellbeing
- People with mental health problems do not always have access to good quality housing
- People who have mental health problems find it difficult to get jobs
- Conwy and Denbighshire have higher rates of suicide than the Wales average
- Conwy and Denbighshire have very high rates of prescribing medicines for mental health problems

7 Market Assessment

The market is defined as the services that are provided within an area, and the ability of those providers to respond to agreed priorities.

Five tiers were adopted, which were used to identify the services available in Conwy and Denbighshire.

Tier Zero relates to mental health education and promotion. This was identified as a priority in the needs assessment and the Vision, Values and Principles event.

Tier One relates to primary care services. Primary Care link workers are available throughout the whole of Conwy and Denbighshire, although counselling is not provided at every General Practice (GP).

GPs can choose to provide additional services for the care of people with mental health problems and all practices except one in Conwy and one in Denbighshire have chosen to provide this service.

The Supporting People programme provides a range of housing related support for people with mental health problems in Conwy and Denbighshire.

The voluntary sector provides a range of services throughout Conwy and Denbighshire.

The main provider of tier two services is the Integrated Partnership for Adult Mental Health and Social Care. Tier two services include – community support services, the Community Mental Health Teams (CMHT's), Home Treatment, Supportive Outreach, Psychiatric Liaison, Acute Inpatient Services, Tan y Castell and Bron Haul.

Tier three services include services which are provided on a regional basis, and includes the independent sector.

Tier four services include the medium secure unit at Ty Llewelyn.

8 Resource Mapping and Analysis

This section identifies the resources that are available to the commissioners to develop services, and the current amount spent on adult mental health services in Conwy and Denbighshire.

One way of managing budgets is to pool funds and manage the budget as one pot. This has not yet been adopted in Conwy and Denbighshire.

The LHB's and LA's mainly receive funding from WAG, in response to formulas which calculate the likely demand in each area.

During 2005 – 06, both Conwy and Denbighshire LHB's spent more on mental health, as a percentage of the population than the Wales average.

Social Services expenditure in Conwy and Denbighshire during 2005 – 06, was also higher than the Wales average.

Conwy and Denbighshire are moving towards long-term joint commissioning arrangements which will provide more stability for the voluntary sector organisations, and provide services which make a contribution to agreed priorities. The total value of services commissioned from the voluntary sector is in the region of £1.5 million per year.

Conwy and Denbighshire are committed to effective service user and carer participation, and the annual investment is in the region of £100,000.

All 4 partners have significant expenditure on placements for individuals with severe or enduring mental illness. Most of these placements are with the independent sector, and in many cases, the most appropriate services is outside Conwy and Denbighshire. The cost of providing this special care for individuals is also increasing.

All 4 partners are experiencing financial pressures, including the health related Service Change and Efficiency Plans (SCEP), and the social services annual efficiency savings.

In 2005 – 06, Supporting People services to adults with mental health problems in Conwy and Denbighshire totalled approximately £1.2million pounds, which is approximately 10% of the total allocation in each county. This funding is currently under threat, and the current proposals will have serious implications for mental health services in Conwy and Denbighshire.

9 Gap Analysis

The following gaps have been identified in mental health services in Conwy and Denbighshire –

- Mental health promotion and education
- Voluntary sector
- Primary care
- Community mental health services
- Home Treatment
- Housing
- Psychological therapies
- Psychiatric intensive care facilities
- Out of county placements
- Specialist services

We also need to review services regularly to ensure that they are fully utilised.

10 Future Commissioning Priorities

The priorities which will influence commissioning include the Vision, Values and Principles and the significant findings from the needs assessment.

11 Contractual Arrangements

Commissioning must be supported by written documents, which outline the legal arrangements, the service to be provided and how the performance will be measured. These documents are known as contracts or service level agreements.

A range of contractual arrangements are available to the partners to support commissioning, including

- Lead commissioner – where one organisation agrees to manage the contractual arrangements on behalf of another
- Joint commissioning – where two or more organisations pool their budgets

Each of the partner agencies must operate within their financial procedures and standing orders, which outline the legal and accounting procedures that have to be followed.

Tendering is a part of the commissioning process, and enables organisations to submit an application to provide a service that they are interested in.

12 Monitoring, Review and Evaluation

Monitoring serves many purposes, including the assessment of the quality of a service, effectiveness, value for money, accountability and arrangements for managing the service, and areas for investment and disinvestment.

Where services are commissioned by the 4 partner organisations the monitoring requirements are set out in the contract.

Commissioners want to find out whether the service is doing what it set out to do, ie, whether it is achieving its outcomes, as well as the numbers of people using the service.

The care of individuals who receive services outside Conwy and Denbighshire is monitored on a regular basis.

A range of performance targets are set by the Welsh Assembly Government, and the commissioners have to comply with these targets.

An Integrated Business Unit has been established, which includes members of the Integrated Partnership. The role of this unit is to bring together all the systems for monitoring to ensure some consistency.

The Joint Local Adult Mental Health and Social Care Action Plan outlines the actions necessary to achieve this strategy and identifies the groups responsible for monitoring those actions.

Service users and carers take an active part in monitoring and reviewing all services.

Equality Impact Assessment

An Equality Impact Assessment will be undertaken on the full strategy after consultation.

**COMMENTS ON THE JOINT COMMISSIONING STRATEGY FOR
ADULT MENTAL HEALTH AND SOCIAL CARE,
CONWY AND DENBIGHSHIRE.**

We have suggested some questions below that you might like to answer as you read through the summary or the full document.

Your opinion is important to us, and please add any other comments that you think are relevant.

1. Have you read the supporting documents?

Copies of these documents are available on Conwy and Denbighshire Local Health Board websites, www.conwyhnb.wales.nhs.uk or www.denbighshirehnb.wales.nhs.uk

If you want to receive a paper copy, please tick the box and **complete your contact details at the end of the form.**

Title of Document	I have read this document. YES/NO	I would like to receive a paper copy. YES/NO
Cunnah F, (2007) Mental Health (Adults), Current Information and Issues that impact on the Mental Health and Illness of Adults of Working Age within the counties of Conwy and Denbighshire. <i>(This document is referred to as the "Needs Assessment")</i> .		
Jones, J, (2007), Joint commissioning Strategy for Adult Mental Health and Social Care, Conwy and Denbighshire, 2007 – 2010 <i>(This is the full strategy document)</i> .		
Jones, J, (2006), Conwy and Denbighshire Joint Adult Mental Health and Social Care Action Plan, 2006 – 2010. <i>(This action plan provides a local response to the National Service Framework and Baseline Reviews, and identifies how those actions will be achieved in Conwy and Denbighshire)</i> .		
Jones, J, (2007), Vision, Values and Principles, Report from the Henllan Workshop, 16 th February 2007. <i>(This report is from the stakeholder event which was held to inform the Joint Commissioning Strategy)</i> .		

2. Are you clear why we have developed a Joint Commissioning Strategy?

YES/NO

3. Do you understand what Commissioning is?

YES/NO

4. Do you agree with the Vision?

YES/NO

If no, what would you prefer to have included in the Vision?

5. Do you agree with the Principles that support this strategy?

YES/NO

If no, do you have any suggestions for other principles?

6. Are there any other national strategies or plans that may influence local priorities for mental health in Conwy and Denbighshire?

7. Are there any other mental health interest groups that we haven't included?

8. Have you read the Needs Assessment document?

YES/NO

If yes, did you find it helpful? Do you have any suggestions for further areas of work?

9. Are there any services that we should have included in the Market Assessment?

10. Did you find the resource allocation section helpful?

YES/NO

If no, what would you like to see included in this section?

11. Do you agree with the priorities identified in the Gap Analysis section?

YES/NO

If no, what would you like to see included in this section?

12. Are you interested in being part of a group to undertake an Equality Impact Assessment on the strategy?

YES/NO

If Yes, please provide your contact details below.

11. Do you have any other comments?

Contact Details (*Please complete if you require paper copies of any documents or are interested in taking part in the Equality Impact Assessment*)

Name _____

Position/Area of Interest _____

Address _____

Telephone _____

Email _____

Thank you for taking the time to help us develop this strategy.

Please return to Lynne Barnett, by 30th September 2007.

lynne.barnett@denbighshirelhb.wales.nhs.uk

or

Lynne Barnett
Denbighshire Local Health Board
Livingstone House
H M Stanley Hospital
St Asaph
LL17 0RS